

# LITHIONICS BATTERY®

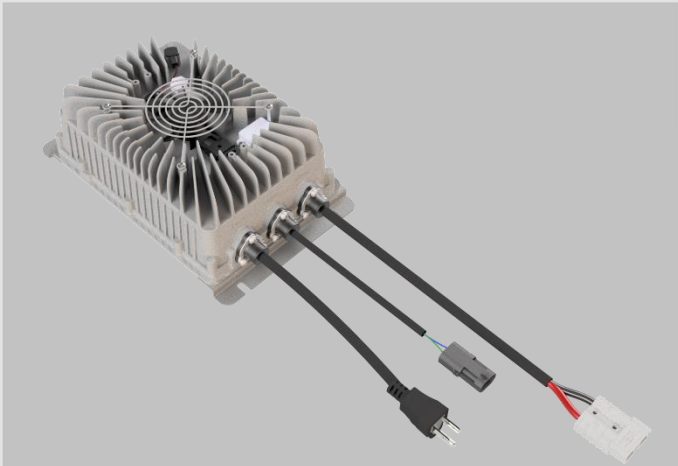
LITHIUM ION IRON PHOSPHATE BATTERY SYSTEMS



PART NUMBER:  
20-300 NCC2500

NeverDie® CANbus CHARGER SERIES

USE: with NeverDie® BMS



## NCC2500 Charger Technical Specifications

AC Input Voltage Range	85-265VAC
AC Input Voltage Nominal	120VAC / 220VAC
AC Input Frequency	50-60Hz
AC Power Factor	> 0.99
DC Output Voltage Nominal	24V-370V
DC Output Wattage	Max 2500W
DC Voltage Accuracy	≤ 0.5%
DC Current Accuracy	≤ 2%
Conversion Efficiency	> 95%
Operating Temperature	-25C to +55C
Storage Temperature	-40C to +80C
Environmental Rating	IP 66
Weight	12lbs
Dimensions (LxWxH)	10.8" x 10.3" x 3.4"

Model	DC Nominal Voltage	Max Output Current @ 110VAC Input	Max Output Current @ 220VAC Input
NCC2500	24V	25A	25A
NCC2500	48V	25A	35A
NCC2500	51V	25A	35A
NCC2500	72V	25A	30A
NCC2500	96V	13A	25A
NCC2500	144V	13A	20A
NCC2500	312V	10A	10A

## CHARGER FEATURES

The NeverDie® CANBus Charger is designed to require a CANBus Data Connection from the NeverDie® Advanced or Standard series Battery Management for advanced charger control.

- ✓ Advanced high efficiency intelligent charger technology
- ✓ Sealed, highly water resistant, & compact enclosure (IP 66)
- ✓ 85-265VAC input range, 50/60 Hz
- ✓ > 0.99 Power Factor minimizes utility surcharges and maximizes use of AC power
- ✓ Precise processor-controlled advanced charging algorithm management
- ✓ CANBus data connection to NeverDie® Battery Management System for advanced charger control
- ✓ LED indication: charging stage & error reporting
- ✓ Short circuit, low & high voltage, over temperature, & reverse polarity protection
- ✓ Efficiency >95%
- ✓ 100% Quality Tested
- ✓ Parallel connect to increase charging rates

### PARTS INCLUDED:

- 110VAC Cord/Plug
- Mating CANBus Connectors
- Mating Anderson DC Connector

### OPTIONAL ACCESSORIES:

- DC Charger Harness
- Remote LED Status Indicator
- CANBus Cable Extension