

87654321

D


C


B

A

| Specifications   |  |
|--|--|
| Voltage  | 12.8V to 51.2V (4S-16S)  |
| Amperage Continuous  | 400A*  |
| iONbus (M12 Connector)   | Combines OptoLoop and CANbus RV-C technology into one circular connector. Replaces previous generation OptoLoop and TIS Temperature Sensors.   |
| AMPSEAL-14 Functions (Support depends on specific AMPSEAL-14 wire harness) | FCC, AGSR, Remote Lighted Reset, Alarm, Battery Low LED, E-Stop, RS232, Aux. Power (AC-Sense)  |
| Pre-charge   | Included, all supported voltages   |
| Dual Channel Option  | Yes, for separate Charge and Discharge DC busses   |
| Bluetooth  | Includes App (iOS, Android). Monitoring, Datalogging, Firmware Updates, PIN Security   |
| Protection Features  | Reserve, Pack Over and Under Voltage, Cell Over and Under Voltage, Cell Over and Under Temperature, Contactor Over-Temperature, Contactor State, Short Circuit, Over Current, Pre-charge |
| Optional Features  | Dual Channel, RS232 (but removes BT), Ethernet TCP/IP, E-Stop, IONGage   |
| Easily Integrates With   | NCC CANbus Chargers, IonGage Display, IonGate for Victron Cerbo Support, Wakespeed WS500 Alternator Regulator  |
| Weight   | 8.0 lbs  |
| Dimensions   | Overall: 13.0" x 23.74" x 4.0"Enclosure only: 11.25" x 7.0" x 4.0"   |
| IP Rating  | IP66   |

\* 400A continuous requires 350MCM or 2x 4/0 cables connected to each of the BMS terminals for heat dissipation. With single 4/0 connection rating is 325A.

UNLESS OTHERWISE SPECIFIED:  
DIMENSIONS ARE IN INCHES  
TOLERANCES:  
FRACTIONAL +/- 1/32  
ANGULAR +/- .25° BEND +/-  
TWO PLACE DECIMAL +/- .020  
THREE PLACE DECIMAL +/- .005  
Inspection Dimension:



Lithionics Battery

DESCRIPTIONBMS V9

PROJECTBattery Management Systems

PART NO.AP097 Single Channel

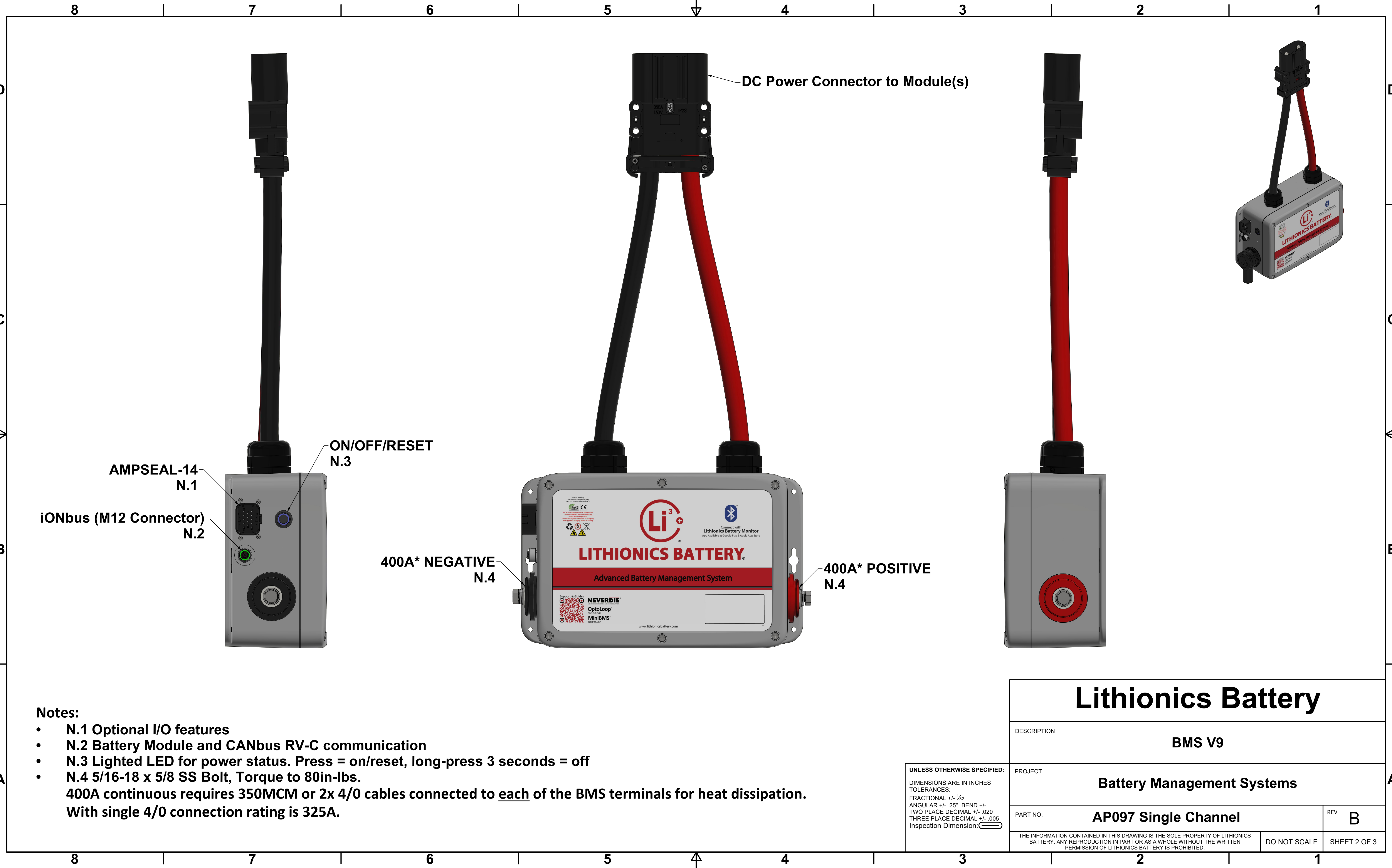
REV B

THE INFORMATION CONTAINED IN THIS DRAWING IS THE SOLE PROPERTY OF LITHIONICS BATTERY. ANY REPRODUCTION IN PART OR AS A WHOLE WITHOUT THE WRITTEN PERMISSION OF LITHIONICS BATTERY IS PROHIBITED.

DO NOT SCALE

SHEET 1 OF 3

87654321

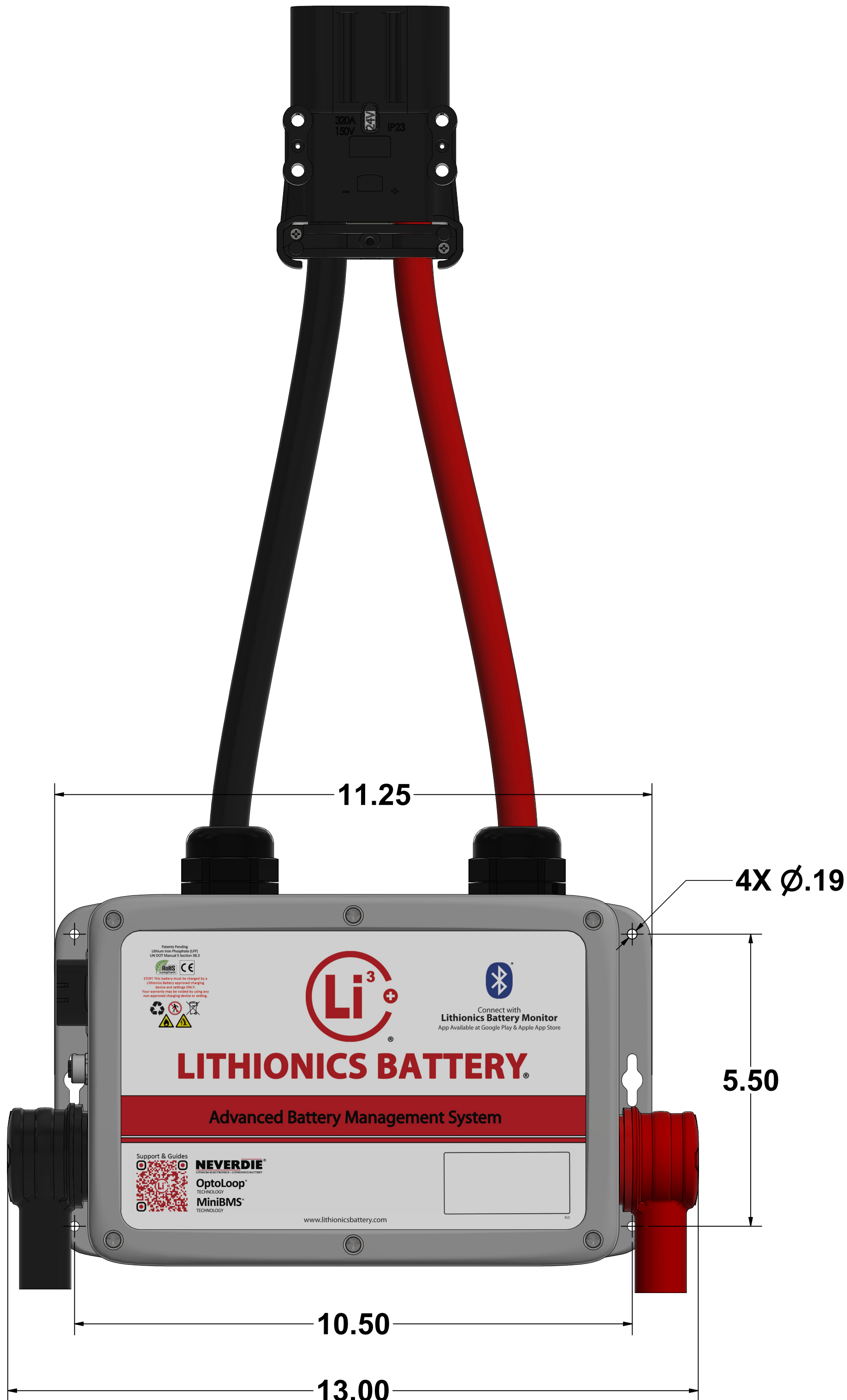


- Notes:
- N.1 Optional I/O features
  - N.2 Battery Module and CANbus RV-C communication
  - N.3 Lighted LED for power status. Press = on/reset, long-press 3 seconds = off
  - N.4 5/16-18 x 5/8 SS Bolt, Torque to 80in-lbs.  
400A continuous requires 350MCM or 2x 4/0 cables connected to each of the BMS terminals for heat dissipation.  
With single 4/0 connection rating is 325A.

UNLESS OTHERWISE SPECIFIED:  
DIMENSIONS ARE IN INCHES  
TOLERANCES:  
FRACTIONAL +/- 1/32  
ANGULAR +/- .25° BEND +/-  
TWO PLACE DECIMAL +/- .020  
THREE PLACE DECIMAL +/- .005  
Inspection Dimension:

| Lithionics Battery   |                            |                           |
|--|----------------------------|---------------------------|
| DESCRIPTION  | BMS V9                     |                           |
| PROJECT  | Battery Management Systems |                           |
| PART NO.   | AP097 Single Channel       | REV B                     |
| THE INFORMATION CONTAINED IN THIS DRAWING IS THE SOLE PROPERTY OF LITHIONICS BATTERY. ANY REPRODUCTION IN PART OR AS A WHOLE WITHOUT THE WRITTEN PERMISSION OF LITHIONICS BATTERY IS PROHIBITED. |                            | DO NOT SCALE SHEET 2 OF 3 |





Shown with elastomeric terminal boots (included)

UNLESS OTHERWISE SPECIFIED:  
DIMENSIONS ARE IN INCHES  
TOLERANCES:  
FRACTIONAL +/- 1/32  
ANGULAR +/- .25° BEND +/-  
TWO PLACE DECIMAL +/- .020  
THREE PLACE DECIMAL +/- .005  
Inspection Dimension:

| Lithionics Battery   |                            |                           |
|--|----------------------------|---------------------------|
| DESCRIPTION  | BMS V9                     |                           |
| PROJECT  | Battery Management Systems |                           |
| PART NO.   | AP097 Single Channel       | REV B                     |
| THE INFORMATION CONTAINED IN THIS DRAWING IS THE SOLE PROPERTY OF LITHIONICS BATTERY. ANY REPRODUCTION IN PART OR AS A WHOLE WITHOUT THE WRITTEN PERMISSION OF LITHIONICS BATTERY IS PROHIBITED. |                            | DO NOT SCALE SHEET 3 OF 3 |