

AGT-DC 11000-48V PMS

General Technical Data

| | |
|-----------------------------|--|
| Model.: | AGT-DC 11000-48V PMS |
| Generator Type | Direct Current (DC) Line <ul style="list-style-type: none"> • Deisgned for DC-AC Power Systems with battery plus inverter • Generator is only required to operate intermittently • Optimal utilization of the generator • High degree of efficiency • Compact Design • Lower fuel consumption • DC / AC DAPS => Optimal Power Systems |
| Generator Family | 11000-48V <ul style="list-style-type: none"> • external 12V fuel pump |
| Generator Version.: | PMS <ul style="list-style-type: none"> • Suitable for internal installation • Low ambient temperatures • External control panel with cable • Dual circuit cooling |
| Article number.: | 0015064 |
| Additional Features | <ul style="list-style-type: none"> • 12V/10A Alternator for charging the starter battery |
| Area of Application.: | Marine Generator (M) |
| Frequency [Hz] | 400 |
| Generator manufacturer | Fischer Panda GmbH |
| Isolation class of windings | H |
| Winding Type | Permanent Magnet |

| | |
|------------------|--------|
| Charging Voltage | Direct |
|------------------|--------|

Electrical Alternator

0 (agt)

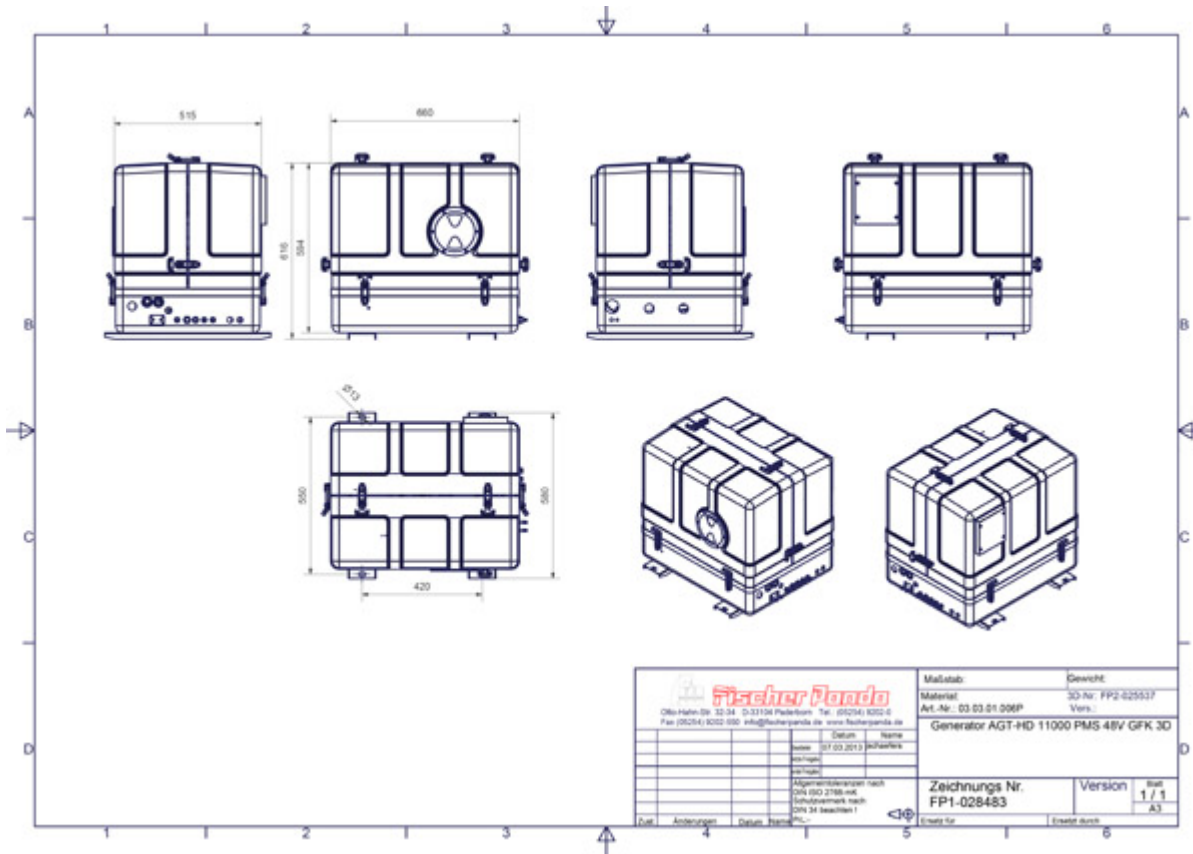
| | |
|--|--------------------------------|
| Engine Speed [rpm] | On request |
| Nominal Performance ¹⁾ | 10.90 |
| Continuous Performance [kW] ¹⁾ | 10.90 |
| Nominal Voltage [V] ¹⁾ | 12V - 400V versions available. |
| Constant current rate [A] | Current dependent upon voltage |
| Peak current rate [A] | Current dependent upon voltage |

All performance data applies to generator operation at 100m above sea level at 20°C. Performance reductions can occur when operating at greater heights.

Engine Data

| | |
|---------------------------------|--------------------|
| Engine Manufacturer | Kubota (KU) |
| Engine Type | D902 |
| No. Cylinders | 3 |
| Displacement [cm ³] | 898 |
| Starter System | 12V (24V Optional) |

Sound Insulation Cover (Generator Housing / Sound Shield)



(/images/gensets/capsules/FP1-028483.pdf)



(/images/gensets/capsules/FP1-028483.pdf)

PDF (/images/gensets/capsules/FP1-028483.pdf)

| | |
|--|--|
| Version | GFK 3D |
| Article Number | 0015064 CAD REF:0005001 |
| Drawing Ref. | FP1-028483 (/images/gensets/capsules/FP1-028483.pdf) |
| Sound Cover Type | GFK (Glass fibre reinforced polyester) |
| Sound Insulation Material | 3D |
| Dimensions Housing (L x W x H *)*) | Refer to Capsule Drawing of Sound Shield |
| Total Weight of Generator with Capsule | Refer to Capsule Drawing of Sound Shield |
| Sound Cover Upgrade Options (on request) | ->MPL 4DS |

Disclaimer






All technical data and specifications including dimensions, performance data, weight and material specifications are only valid when they are explicitly expressed in writing. All data should be considered only for approximation purposes because the data from these sources is gathered from current and previous models. As a result of continual product improvement and modification, the validity of technical data from these sources cannot be guaranteed. 3D-models are only provided on special request. It is the responsibility of the customer to ensure in all cases when ordering that technical data is valid and that the specifications meet his/her requirements.

*) The dimensions are for the sound insulation housing ONLY and do not include additional parts or fittings such as fasteners, closures or mounting brackets etc.

Therefore please note: You must consider the additional space will need to be calculated for the installation. This is of importance when planning the installation with respect of cables, hoses and mounting feet.

***) Generators with DVS windings are slightly longer than those with HP1 or HP3 windings. Specific dimensions are available on request.

Documentation

| | | |
|---|--|--|
|  | <p>Control - AGT 2500/4000</p> <p>Articlenumber : 0000520</p> <p>(/images/gensets/docs/FPO1-0010857.pdf) (/images/gensets/docs/FPO1-0010856.pdf) (/images/gensets/docs/FPO1-0010858.pdf)</p> | |
|  | <p>Generator Handbook / Operators Manual</p> <p> (/images/gensets/docs/FPO1-0003815.pdf)  (/images/gensets/docs/FPO1-0010823.pdf)</p> | |
|  | <p>Capsule / Sound shield Drawing : FP1-028483 (/images/gensets/capsules/FP1-028483.pdf)</p> <p>Articlenumber:0015064 (< 2017 : 03.03.01.006P) (/images/gensets/capsules/FP1-028483.pdf)</p> | |

General information, brochures and flyers can be found in the "Download" area (</prospekt-eng.htm>)

Service- / installation kits and shock mountings

Note: Actual Service- / installation kits and shock mountings may differ from those displayed depending on Generator type.

Service Kit "PLus"

0000677



Installation Kit Basic (without exhaust/water separator)

0000674



Installation kit Premium (with exhaust/water separator)

0002752



Shock-mounting, captive

0009675



Panda 11000-48V Generator Versions



AGT-DC 11000-48V PMS

Marine Installation

(/Generator-Datasheet-AGT-DC_11000-48V_PMS-48_DC_-_400_Hz_82.htm)

Contact us for more
information or a quote

Share**f** Facebook**✉** eMail

(https://www.facebook.com/sharer/sharer.php?u=http://www.fischerpanda.de/Generator-Datasheet-AGT-DC_11000-48V_PMS-48_DC_-_400_Hz_82.htm)

(mailto:Share.php?u=http://www.fischerpanda.de/Generator-Datasheet-AGT-DC_11000-48V_PMS-48_DC_-_400_Hz_82.htm&subject=AGT-DC%2011000-48V%20PMS)

About Fischer Panda

We are a leading manufacturer of diesel generators, hybrid and drive systems for mobile marine and vehicle applications. Our generators are renowned worldwide for their compact design and extremely low sound levels while running. Our team has over 500 technicians and dealers in over 80 countries worldwide.

Fischer Panda GmbH

[SITE TERMS AND CONDITIONS \(/COMPANY-INFORMATION.HTM\)](#)

[WARRANTY CONDITIONS \(/WARRANTY-CONDITIONS-FOR-MOBILE-AND-STATIONARY-FISCHER-PANDA-GENERATORS.HTM\)](#)

[DELIVERY AND PAYMENT CONDITIONS \(/GENERAL-TERMS-AND-CONDITIONS-OF-DELIVERY-AND-PAYMENT.HTM\)](#)

[PURCHASING & PAYMENT CONDITIONS \(/PURCHASING-AND-PAYMENT-CONDITIONS.HTM\)](#)

[DATA PROTECTION POLICY \(/DATA-PROTECTION-POLICY.HTM\)](#)

[CERTIFICATION AND MEMBERSHIP \(/CERTIFICATION-AND-MEMBERSHIP.HTM\)](#)

Sales Enquires

D TELEFON +49 5254 9202-0

US PHONE: +1 954.462.2800

UK PHONE: +44 1202 820840

CHINA PHONE: +86 10 6590 6591

SOS SERVICE HOTLINE:+49 (0)5254 9202-767

Address

Fischer Panda GmbH

Otto-Hahn-Str. 40

33104 Paderborn

Deutschland

Email: info@fischerpanda.de (<mailto:info@fischerpanda.de>)



2019 © All Rights Reserved. v2.1 [Site Terms and Conditions \(/company-information.htm\)](#) | [Data Protection Policy \(/data-protection-policy.htm\)](#) | [Cookie Settings](#) | [Distributor Login \(http://d2.fischerpanda.de/eng\)](http://d2.fischerpanda.de/eng)

[f \(https://facebook.com/fischerpanda\)](https://facebook.com/fischerpanda) [You Tube \(http://www.youtube.com/user/systemsmedia\)](http://www.youtube.com/user/systemsmedia)

[Instagram \(http://www.instagram.com/fischerpanda/\)](http://www.instagram.com/fischerpanda/)